

ÜBERSICHTSZEICHNUNG

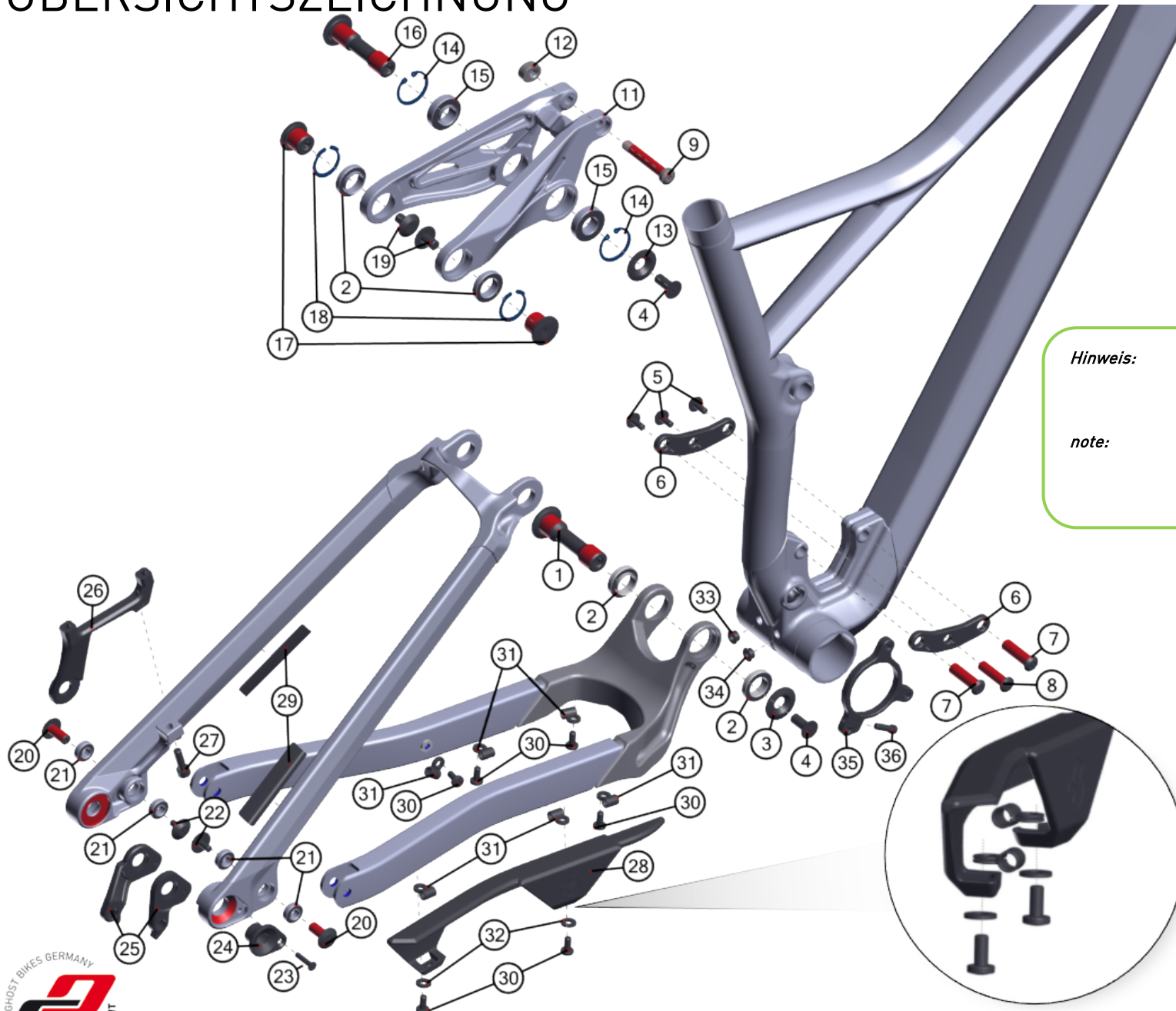


FRAMR 8.7, 6.7, 4.7 (MY19)

2018-06-05

V01

ÜBERSICHTSZEICHNUNG



Hinweis:

Bei Schrauben muß mittelfeste Gewindegewissicherung verwendet werden.
Rote Flächen müssen gefettet werden.

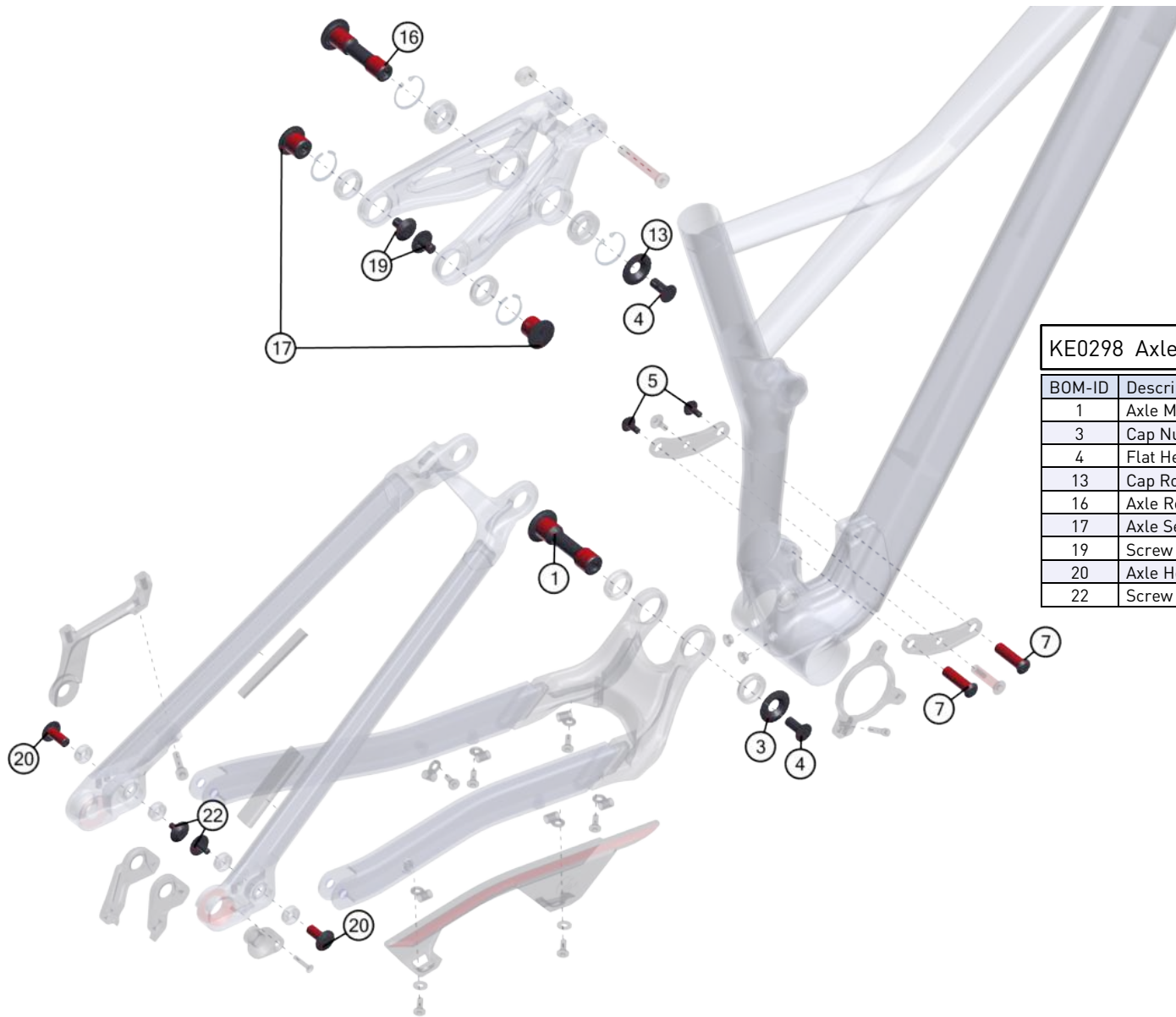
note:

use medium strength screwlock for screw threads.
red surfaces has to be greased.

ÜBERSICHTSZEICHNUNG

BOM-ID	Description	Specification	Torque	Drawing no. supplier	Item no.	QTY
1	Axel Main Pivot	T50 - ø17 (M8)	8 Nm	GHO-AMR16AX-AMP	SM1364	1
2	Seat Stay & Main Pivot bearing			6803V2RS/8	SM1379	4
3	Cap Nut Main Pivot			GHO-AMR16NP-NMP	SM1370	1
4	Flat Head Screw M8	T30 - M8 x 20mm	8 Nm or 12 Nm	GHO-AMR16SC-PM820	SM1375	2
5	Screw Shock Mount	T25 - M5 x 12mm	6 Nm	GHO-AMR16SC-NSM512	SM1377	3
6	Shock Mount			G27M-F15EN18-SM	FROT0027	2
7	Axle Shock Mount			GHO-AMR6N117AX-ASM	SM1367	2
8	Axle Shock	T30 - ø8 (M5) x 40mm		GHO-AMR16AX-ASB	SM1369	1
9	Axle Shock Mount Bolt Top			G27M-F13AM-04-04-040	FRAX0005	1
11	Rocker one piece			G27M-F13AM_04-02-300	FROT0023	1
12	Insert nut for Rocker			G27M-F13AM-04-04-080	FRNT0004	1
13	Cap Rocker Fix Pivot			G27M-F13AM-04-04-050	FROT0020	1
14	Circlip RFP	28mm DIN 472		IRTW-ø28	FRWS0028	2
15	Seat Tube - Rocker Pivot Bearing			6902V2RS/10	SM1380	2
16	Axle Rocker Fix Pivot	T50 - ø15 (M8) x 62,5mm	12 Nm	G27M-F13AM-04-04-041	FRAX0006	1
17	Axle Seat Stay Pivot	T50 - ø17 (M8) x 13,5mm	8 Nm	G27M-F13AM-04-04-042	FRAX0007	2
18	Circlip SSP	26mm		IRTW-ø26	FRWS0026	2
19	Screw SS Yoke	T30 - M8 x 13mm	8 Nm	GHO-AMR16SC-NSM813	SM1378	2
20	Axle Horst Link	T30 - ø8 (M5) x 18,9mm	6 Nm	GHO-AMR16AX-AHL	SM1363	2
21	Horst Link Pivot Bearing			688B1+B1-VRS	SM1381	4
22	Screw CS&D0	T25 - M5 x 11mm	6 Nm	GHO-AMR16SC-NSM511	SM1376	2
23	Flat Head Screw M4	T15 - M4 x 20mm	0,8 Nm	GHT12-062	FRSC0061	1
24	Hanger Mount			GHT12-061	FRNT0061	1
25	Shimano Hanger (A1)			GHT12-058	FRHG0058	1
25	SRAM Hanger (A2)			GHT12-057	FRHG0057	1
26	Disc Brake Mount			G27M-F13AM18-DBM	FROT0013	1
27	Post Mount Screw	T30 - M6 x 26mm	8 Nm	GHO-AMR16SC-SM626	SM1372	1
28	C/S protector			G27M-F13AM18-CSP	FRPR0013	1
29	S/S Protector			GHT14-009	SM1392	2
30	Screw	T25 - M5 x 11 mm	5 Nm		SM0919	6
31	cable guide				SM0002	6
32	Spacer PA black	DIN 125 M5 11,8x1,5x5,3			FRWS0002	2
33	BB cap BR			GHT14-002	SM1390	1
34	BB cap RD			GHT14-001	SM1389	1
35	ISCG Adapter			GHO-AMR16-B03	SM1395	1
36	Screw ISCG			GHO-AMR16SC-SM517	SM1393	1

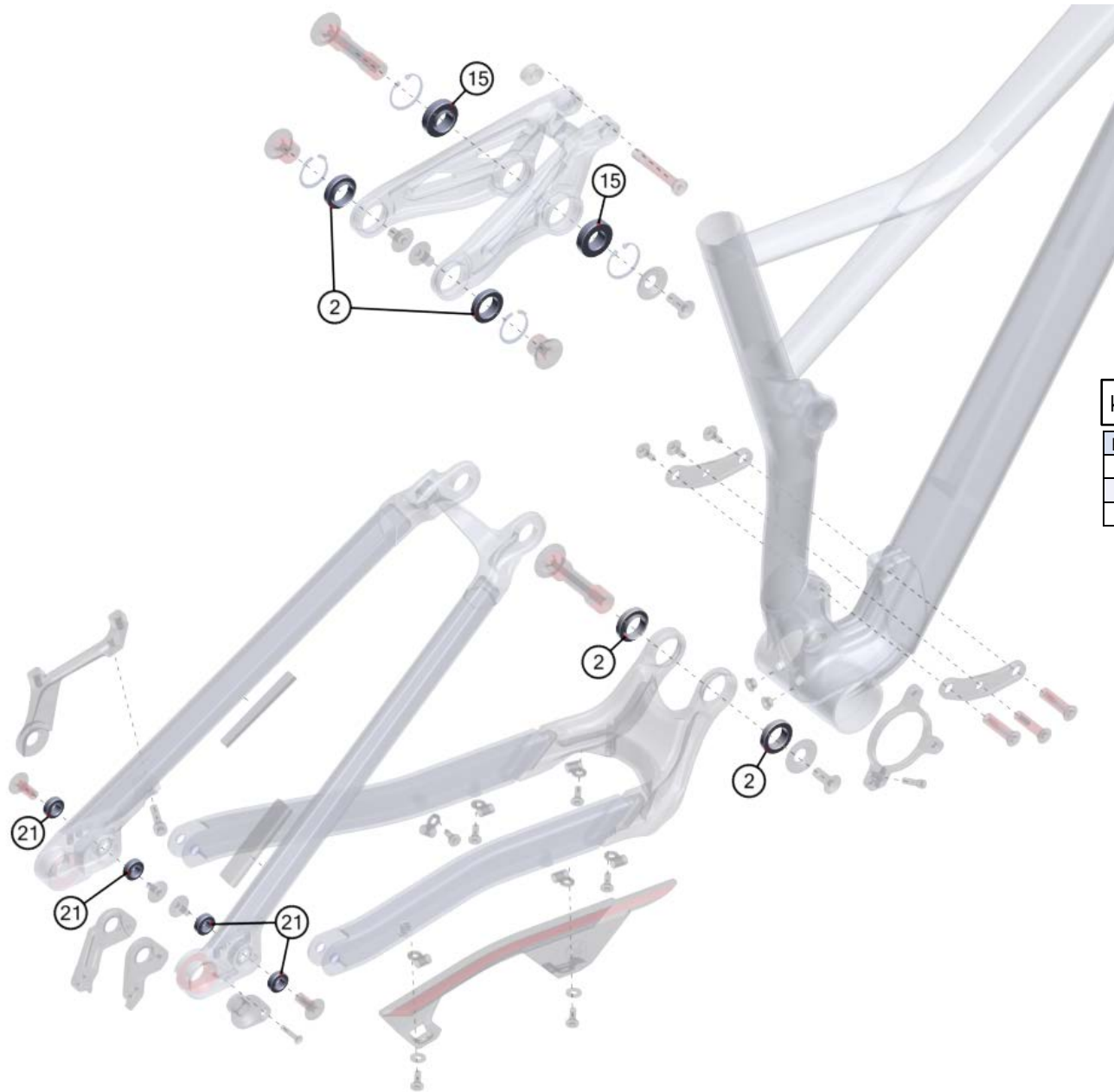
ÜBERSICHTSZEICHNUNG



KE0298 Axle & Screw Kit

BOM-ID	Description	Specification	Torque	Item no.	QTY
1	Axle Main Pivot	T50 - ø17 [M8]	8 Nm	SM1364	1
3	Cap Nut Main Pivot			SM1370	1
4	Flat Head Screw M8	T30 - M8 x 20mm	8 Nm or 12 Nm	SM1375	2
13	Cap Rocker Fix Pivot			FR0T0020	1
16	Axle Rocker Fix Pivot	T50 - ø15 [M8] x 62,5mm	12 Nm	FRAX0006	1
17	Axle Seat Stay Pivot	T50 - ø17 [M8] x 13,5mm	8 Nm	FRAX0007	2
19	Screw SS Yoke	T30 - M8 x 13mm	8 Nm	SM1378	2
20	Axle Horst Link	T30 - ø8 [M5] x 18,9mm	6 Nm	SM1363	2
22	Screw CS&DO	T25 - M5 x 11mm	6 Nm	SM1376	2

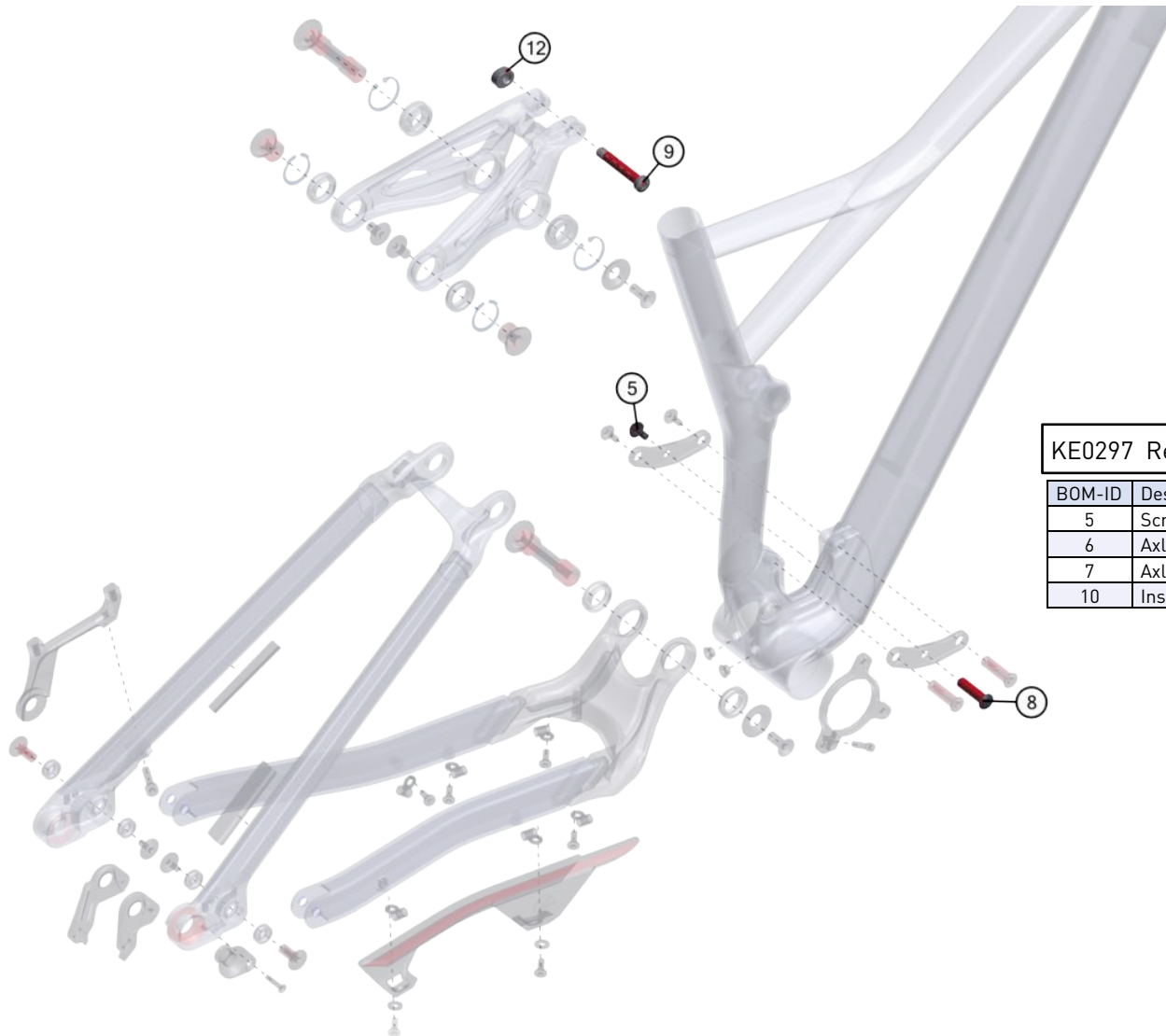
ÜBERSICHTSZEICHNUNG



KE0276 Bearing Kit

BOM-ID	Description	Item no.	QTY
2	Main Pivot & Seat Stay Pivot	SM1379	4
13	Seat Tube - Rocker Pivot Bearing	SM1380	2
19	Horst Link Pivot Bearing	SM1381	4

ÜBERSICHTSZEICHNUNG



KE0297 Rear Shock Screw Kit

BOM-ID	Description	Specification	Torque	Item no.	QTY
5	Screw Shock Mount	T25 - M5 x 12mm	6 Nm	SM1377	1
6	Axle Shock	T30 - ø8 (M5) x 40mm		SM1368	1
7	Axle Shock Mount Bolt Top		6 mm	FRAX0005	1
10	Insert nut for Rocker			FRNT0004	1